

**APARTMENT COMPACTOR
DEALER DELIVERY CHECK SHEET
TO BE CHECKED BY DEALER**

CUSTOMER _____ DATE _____

ADDRESS _____

DEALER _____

ADDRESS _____

COMPACTOR MODEL _____ SERIAL NUMBER _____

POWER UNIT MODEL _____ SERIAL NUMBER _____

DEALER CHECK:

1. ____ Check that power unit reservoir is full of oil.
2. ____ Check that compactor is installed, leveled, and anchored properly.
3. ____ Check that hydraulic hoses from the power pack are connected correctly.
4. ____ Check that all decals are in place and legible. Have requirements of current ANSI Z245 standards been met.
5. ____ Check compactor operation, start and stop.
6. ____ Check if ram area has been lubricated.

DELIVERED BY _____ DATE _____

1. ____ Owner's manual has been provided.
2. ____ Warranty card is filled out and mailed.
3. ____ Reviewed the safety warnings and cautions listed in this manual.
4. ____ Reviewed the maintenance instructions and cautions as listed in this manual.

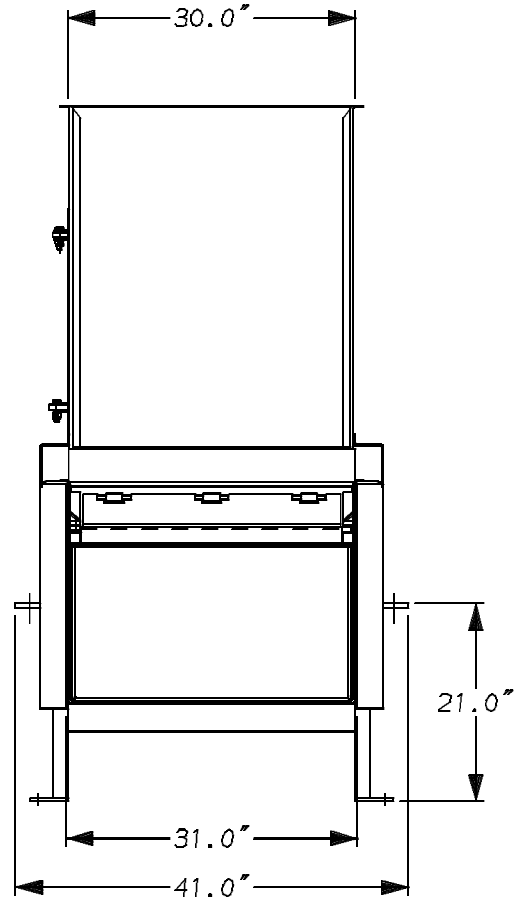
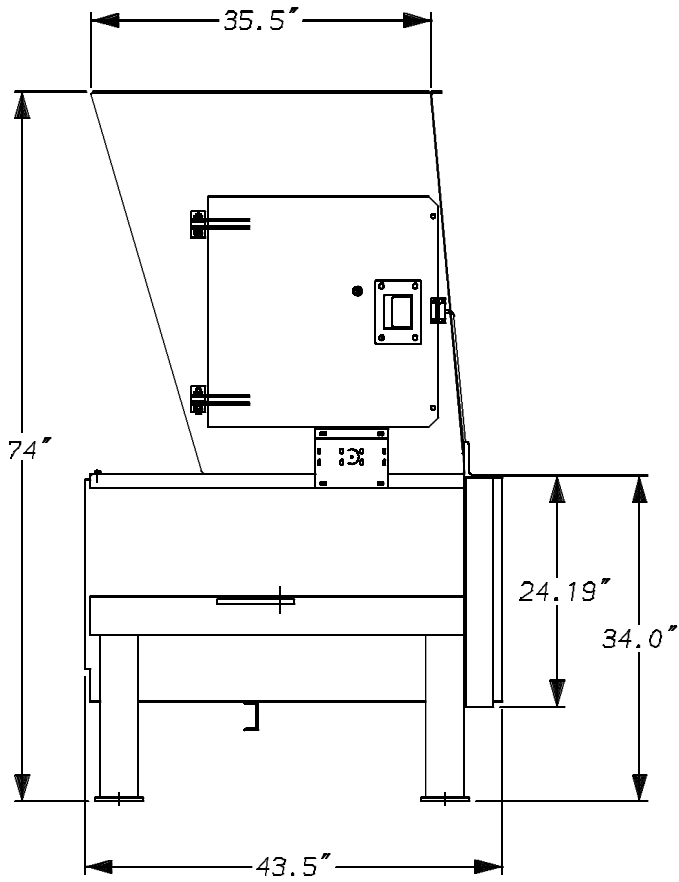
REVIEWED BY _____ DATE _____

Table of Contents

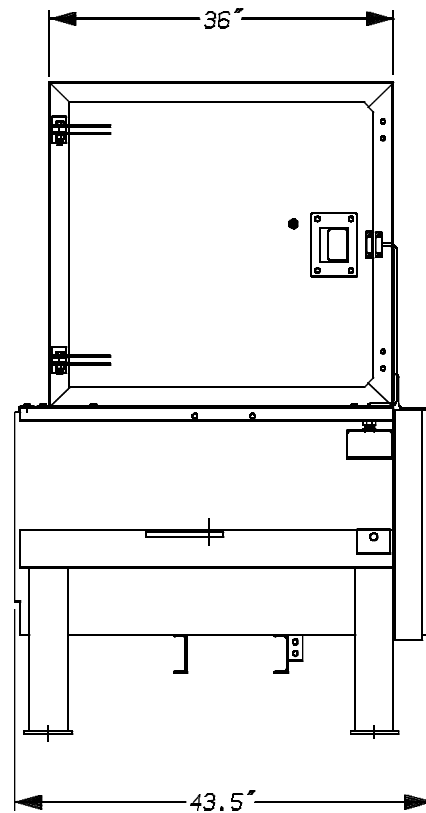
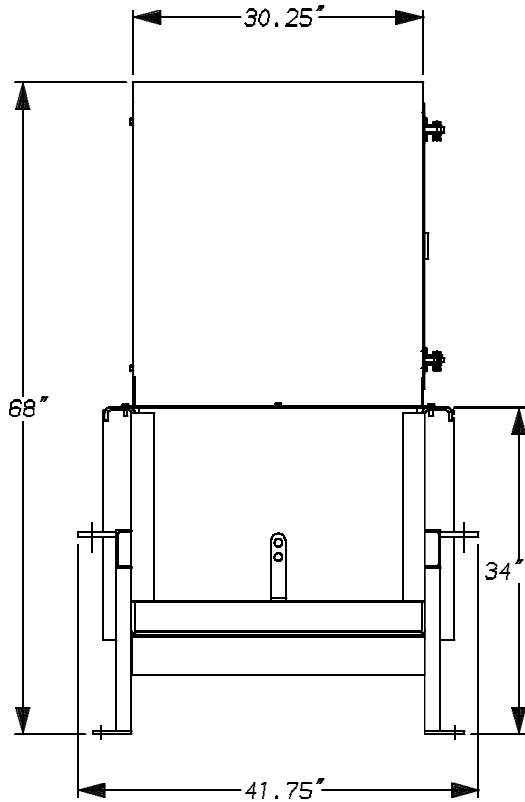
Rev.8/05

WARRANTY		INSTRUCTIONS FOR CONVERTING 3-PHASE POWER UNIT VOLTAGE	O13
DEALER DELIVERY CHECK SHEET	1		
TABLE OF CONTENTS	3	INSTRUCTIONS FOR CONVERTING SINGLE POWER UNIT VOLTAGE	PHASE O14
SPECIFICATIONS	4-5		
SAFETY DECALS	6		
<u>OPERATING INSTRUCTIONS</u>		<u>PARTS SECTION</u>	
INSTALLATION INSTRUCTIONS	O1	APARTMENT COMPACTOR ASSEMBLY	P1
Installation Site	O1	SIDE LATCH ASSEMBLY	P3
Safety Decal Requirements	O2	POWER UNIT ASSEMBLY (Sequence)	P4-P5
Electrical Installation	O2	3-PHASE POWER PANEL (Sequence)	P6-P7
Electrical Requirements	O3	SINGLE PHASE POWER PANEL (Sequence)	P8-P9
START-UP AND TESTING INSTRUCTIONS	O3	3HP HYDRAULIC SCHEMATIC (Sequence)	P10
OPERATING INSTRUCTIONS	O3	1 HP HYDRAULIC SCHEMATIC (Sequence)	P11
Employer Responsibility for Compactor	O5	110V 1-PHASE ELECTRIC SCHEM. (Sequence)	P12
Operating Instructions for Standard Compactors	O5	220V 1-PHASE ELECTRIC SCHEM. (Sequence)	P13
Optional Features	O6	3HP 3-PHASE ELECTRIC SCHEMATIC (Sequence)	P15
MAINTENANCE INSTRUCTIONS	O6	3 HP POWER UNIT ASSEMBLY (Electric)	P16-P17
Work Area Around Compactors	O6	1HP POWER UNIT ASSEMBLY (Electric)	P18-P19
HYDRAULIC SAFETY: READ CAREFULLY	O7	3 HP POWER PANEL ASSEMBLY (Electric)	P20-P21
Avoid Heating Near Pressurized Lines	O7	1HP POWER PANEL ASSEMBLY (Electric)	P22-P23
Warnings pertaining to common abuses of hoses	O7	1 & 3 HP HYDRAULIC SCHEMATIC (Electric)	P24
Preventive Maintenance	O7	3HP, 3-PHASE ELECTRIC SCHEMATIC (Electric)	P25
Initial Check	O8	1HP, 3PHASE ELECTRIC SCHEMATIC (Electric)	P26
Monthly Check	O8	3HP, 3PHASE SCHEMATIC (Electric Eye, Alarm)	P27
3-Month Check	O8	1HP, 1-PHASE SCHEMATIC (Electric Eye, Alarm)	P28
Filter Maintenance	O7	HYD. CONTROL VALVE ASSEMBLY (Sequence)	P29
Annual Compactor Inspection	O7	PRINCE HYDRAULIC CYLINDER ASSEMBLY	P30
Sequence Valve, Relief Valve, Pressure Switch Adj.	O8	OVERHEAD CHUTE HOPPER w/ ACCESS DOOR	P31
Pressure Setting and Adjusting Procedures	O8	FULL ENCLOSED HOPPER	P32
Electric Control Valve Pressure Setting	O9	DECALS	P33
GENERAL MAINTENANCE TIPS	O10		
TROUBLE-SHOOTING	O11		
ELECTRIC MOTOR TROUBLE-SHOOTING	O12		

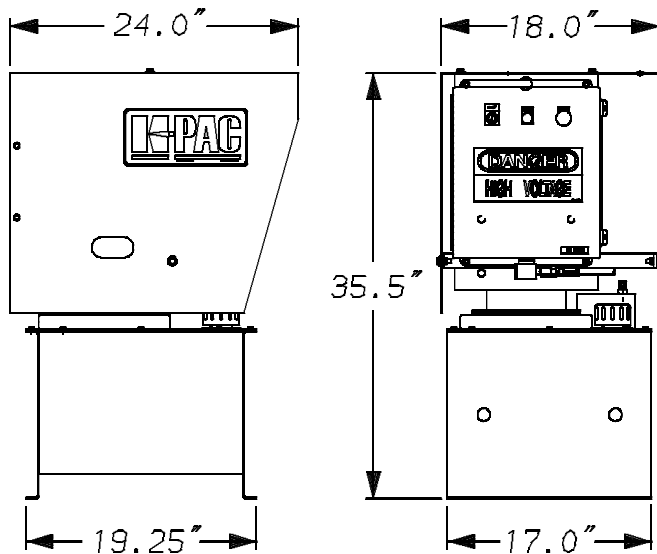
CHUTE HOPPER/COMPACTOR SPECIFICATIONS



FULL ENCLOSED HOPPER/COMPACTOR SPECIFICATIONS



8/01
M9103-26



KP03 SPECIFICATIONS

ELECTRICAL EQUIPMENT

Motor 3HP 208 / 230 / 460 3-Phase 60 Cycle
 Motor 1HP 110 / 220 1-Phase 60 Cycle
 Control voltage 115 VAC
 All circuits fused
 Key operated Start / Stop / Reverse

HYDRAULIC EQUIPMENT

Pump 5 GPM 3HP / 3 GPM 1HP
 Normal Pressure 1,850 PSI
 Maximum Pressure 2,100 PSI
 Hydraulic Cylinder 2 Diagonal 2.5" x 20" Stroke

PERFORMANCE SPECIFICATIONS

Cycle Time (In Seconds) 18 3HP / 29 1HP
 Ram penetration 6"
 Normal Packing Force 15,450#
 Maximum Packing Force 17,540#
 Normal Ram Face Pressure 31.3 PSI
 Max. Ram Face Pressure 35.4 PSI

SPECIFICATIONS

Charge Chamber Capacity
 Mfg. rating 1/3 yd³
 Wastec rating25 yd³
 Clear top opening 22.5" L x 28" W
 Ram face 16.5" x 30" x .38"
 Loading Height 42"
 Weight (Includes Power Unit) ... 1,530 lbs.
 Ram Top25"

SAFETY DECALS

Be sure to read all safety decals carefully.

⚠ WARNING

BEFORE OPENING DOOR:
 TURN CONTROL PANEL KEY SWITCH TO OFF POSITION,
 REMOVE KEY, AND
 BLOCK OFF TRASH CHUTE.

74-474

⚠ WARNING

**THIS COMPACTOR
 STARTS
 AUTOMATICALLY!**

74-473

⚠ CAUTION

**DO NOT REMOVE ACCESS COVER
 EXCEPT FOR SERVICING.**

BEFORE REMOVING ACCESS COVER YOU MUST:

- LOCKOUT & TAGOUT DISCONNECT SWITCH
- TURN CONTROL PANEL KEY SWITCH TO "OFF" POSITION
- REMOVE KEY

74-318

CAUTION

**GATE MUST BE CLOSED
 BEFORE OPERATING
 COMPACTOR**

74-321

CAUTION

KEEP OUT

**DO NOT OPERATE MACHINE
 UNLESS CONTAINER IS
 PROPERLY ATTACHED.**

74-434

⚠ CAUTION

OPERATORS — ALL PERSONS OPERATING THIS COMPACTOR ARE TO READ THE OPERATORS MANUAL AND UNDERSTAND THE SAFETY MESSAGES ON THIS MACHINE.

1. Keep compactor area clean and clear of obstructions.
2. Inspect hydraulic hoses, fittings and electrical hook-up before cycling compactor. Do not use if repairs are needed.
3. Periodic inspection and maintenance is required, safety shields, access doors, and safety devices shall be functionally maintained. (See Manual)
4. DO NOT fill with heavy material, check with hauler for maximum capacity. Manual unloading may be required if overloaded.
5. Obey all warnings and safety instructions.
6. Obey all manufacturers operating instructions.

⚠ WARNING

Escaping fluid under pressure can penetrate the skin causing serious injury. Avoid the hazard by relieving pressure before disconnecting hydraulic lines. Tighten all connections before applying pressure.

Search for leaks with a piece of cardboard. Protect hands and body from high pressure fluids.

If an accident occurs, see a doctor immediately. Any fluid injected into the skin must be surgically removed within a few hours or gangrene may result.

INSPECT the hose assembly before each use.

REPLACE the hose assembly immediately if:

- A. The jacket of the hose appears abnormal.
- B. You have reason to believe it may be abnormal.
- C. There is any fluid leakage.
- D. The couplings are damaged.
- E. The hose is damaged or kinked.
- F. The reinforcement is visible through the jacket.

74-276

KEEP BYSTANDERS CLEAR

74-270

DANGER

**DO NOT
 ENTER**

74-311

CAUTION

KEEP OUT

PRINTED IN U.S.A.