



FRONT/REAR LOAD COMPACTOR

MODEL KP6R/KP6F

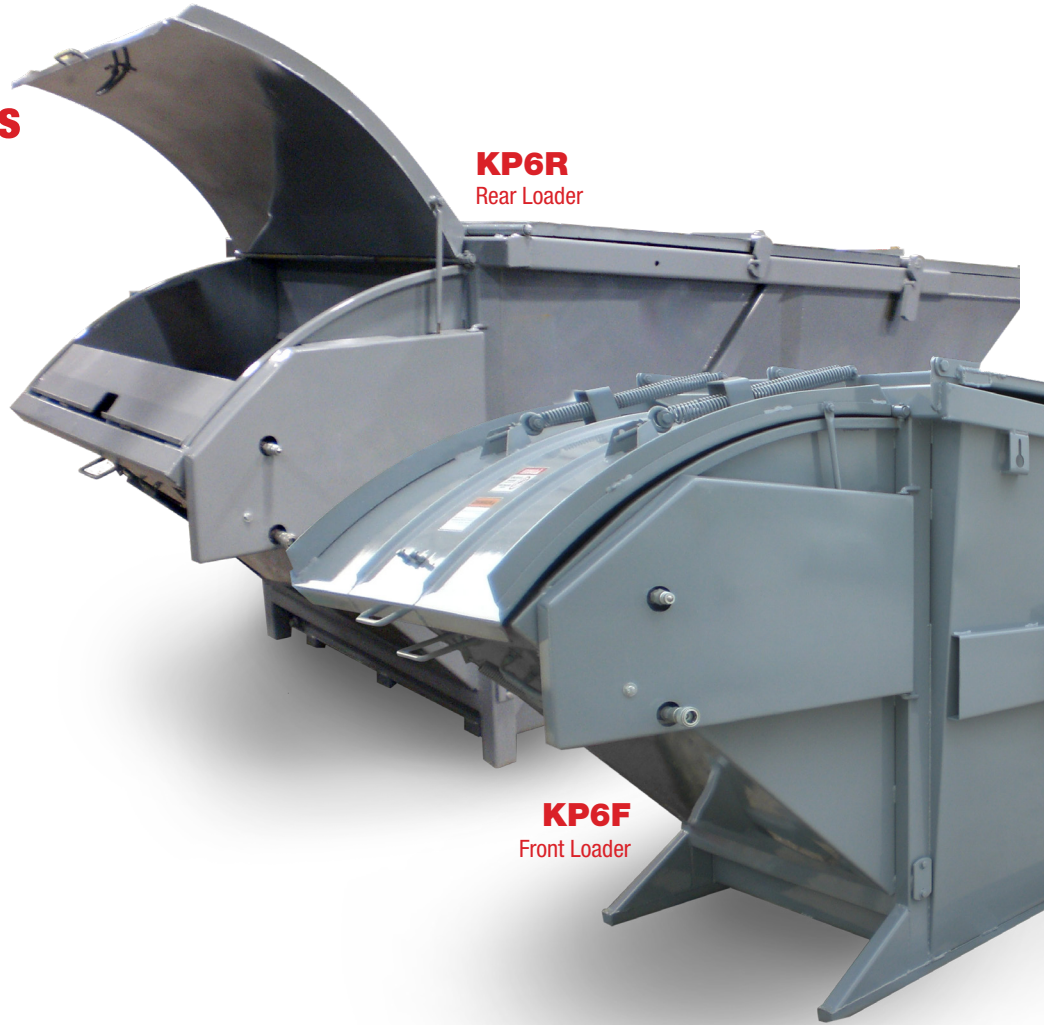
Attractively Blends Into Its Surroundings

K-PAC's neat, clean appearance, in both the rear loading model and the front loading model, blends attractively with its surroundings. With the K-PAC's low 40" loading height, even the most petite person can handle the job. Close the lid, insert the key in the Power Pack Console and turn the K-PAC's powerful hydraulic system on. The packing panel automatically cycles.

Incorporated in the K-PAC design are unique safety features that prevent the compaction cycle from operating while the loading chamber lid is open. Another important safety back-up feature is a mushroom STOP button on the Power Pack console that will halt operation at any point in the cycle. The K-PAC's key-operated system also allows the charge lid to be locked for controlled access.

K-PAC Advantage:

- **Latching System** lid hold down latches for quick driver release when dumping.
- **Compact Weather Proof 3 Phase** and/or Single Phase Power Unit (UL Approved).
- **Loading Chamber Lid** is spring assisted for ease of opening.



KP6R
Rear Loader

KP6F
Front Loader



Latching System



Compact Weather Proof 3 Phase



Loading Chamber Lid



Ready to Roll

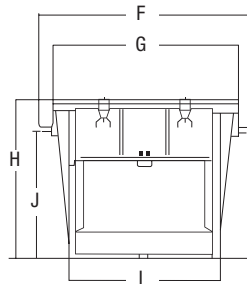
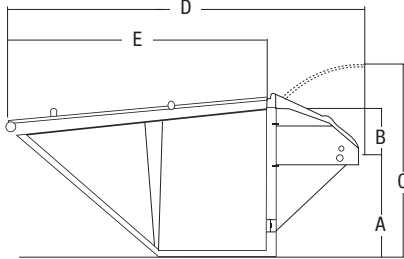
These units are in stock for quick delivery!

- KP03** Apartment Compactors
- KP2SC** Self-Contained Compactors
- KP6F** Front-Load Compactors
- KP6R** Rear-Load Compactors

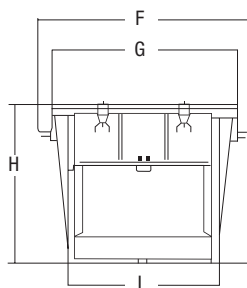
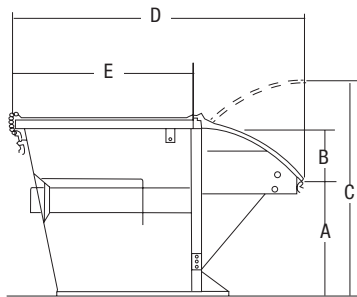
Stationary Compactor Model KP6R/KP6F

Compactor Dimensions

KP6R



KP6F



KP6R/KP6F Specifications

Manufacturer's Rating	1.00 y ³
Ram Face	53"W x 46"H
Clear Top Opening	27.5" x 53.5"
Loading Height	40"
Ram Penetration	13"
Packing Force Normal	21,900 lbs
Packing Force Max.	24,700 lbs
Packing Pressure Normal	1,550 PSI
Packing Pressure Max.	1,750 PSI
Container Capacity	6 y ³
Overall Dimensions	140" L x 78"W x 61"H

Standard Power Pack

Power Pack Cover	Protective Metal Cover with Hydraulic Hose Storage Slot
Power Pack	3 HP 1750 RPM TEFC
Control Panel	208/230/460 Volts 3 Phase 60 Hertz, Key Start Switch & Stop Buttons
Hydraulic Pump	5 GPM Hi-Lo with 200 Mesh Screen Suction Filter
Reservoir	13 Gallons
Fluid	Northland Talamar Extreme LT 1532
Hydraulic Hoses	12" with Quick Hydraulic Couplers Industrial Hydraulic Couplers
Cylinders	2 - 3" x 16"

Cycle Time

Time	26 Seconds
------	------------

MODEL	CAPACITY	A	B	C	D	E	F	G	H	I	J	WEIGHT ¹
KP6R	6 y ³	40"	75"	18"	140"	102"	78"	71"	61"	48"	60"	2,380 lbs
KP6F	6 y ³	40"	18"	75"	102"	63"	82"	75"	62"	60"	-	2,280 lbs

¹ Approximate Shipping Weight with Power Pack

AUTHORIZED DISTRIBUTOR



Check out our other self-contained compactors. If you need help determining the right model for your needs, please contact us at 800.831.1858
Shown KP2SC self-contained compactor model.